



型号 / Model :

CBD15-610

电动托盘搬运车 / Electric Pallet Truck

迷你搬运车 MINI

优点:

- › 他励驱动电机，爬坡能力强；
- › 无级调速，操作简单、方便；
- › 标配紧急反向装置，紧急制动开关；
- › 整车外型小巧，适合狭窄空间作业；
- › 起升自动限位，安全、节能；
- › 免维护蓄电池，安全无污染；
- › 低噪音、低能耗、每天仅需2度电。

Advantages:

- › Separately excited motor, Strong climbing ability.
- › Stepless speed control system, easy to operate.
- › Emergency reversing device and emergency brake switch.
- › Small body, suitable for narrow space.
- › Automatic lifting limit, safety, energy saving.
- › Sealed batteries free of maintenance, safe operation and no pollution.
- › Low noise, low energy consumption, every day only 2KWh.

特性 Feature		
型号 Model	—	CBD15
配置号 Configuration No.	—	610
额定载重 Load capacity	kg	1500
载荷中心距 Load center	mm	600
轴距 Wheel base	mm	1234
操作类型 Operating type	—	步行式 Walkie
车轮 Wheels		
轮子类型 (前/后) Wheels type	—	PU
驱动轮/平衡轮/承重轮数量 Wheel quantity Driving wheel/Balance wheel/Bearing wheel	—	1/2/4
驱动轮尺寸 Driving wheel size	mm	Φ252×67
平衡轮尺寸 Balance wheel size	mm	Φ99.5×40
承重轮尺寸 Bearing wheel size	mm	Φ84×70
尺寸 Dimension		
货叉最低离地高度 Min. fork lowered height	mm	85
货叉最大起升高度 Max. fork lifting height	mm	205
最大起升行程 Max. lifting height	mm	120
货叉外侧间距 Outside width between forks	mm	540/600/650/685
货叉内侧间距 Inside width between forks	mm	220/280/330/365
货叉长度 Fork length	mm	1150/1200
货叉宽度 Fork width	mm	160
货叉厚度 Fork thickness	mm	75
整车全长 Overall length	mm	1630
车体宽度 Overall width	mm	724
整车高度 (含手柄) Overall height (With handle)	mm	1220
整车高度 (不含手柄) Overall height (Without handle)	mm	685
最小转弯半径 Min. Turning radius	mm	1400
最小直角堆垛通道宽度 (托盘800×1200, 1200沿货叉放置) Min. Aisle width for pallets 800×1200	mm	1817
最小直角堆垛通道宽度 (托盘1000×1200, 1200沿货叉放置) Min. Aisle width for pallets 1000×1200	mm	1858
性能 Performance		
最大行驶速度, 满载/空载 Travel speed, laden/unladen	km/h	3.5/4
最大起升速度, 满载/空载 Lift speed, laden/unladen	mm/s	35/40
最大下降速度, 满载/空载 Lowering speed, laden/unladen	mm/s	45/40
爬坡能力, 满载/空载 Gradeability, laden/unladen	%	5/7
电气配置 Electrical configuration		
驱动电机/起升电机 Drive motor/Lift motor	kW	DC 0.63/DC0.8
蓄电池电压/容量 Battery voltage/capacity	V/Ah	24/85
制动 Brake	—	电磁/再生 Electromagnetic/Regenerative
控制器型号 Controller	—	HELI (选配CURTIS)
重量 Weight		
蓄电池重量 Battery weight	kg	48
自重 (包含蓄电池) Service weight with battery	kg	278

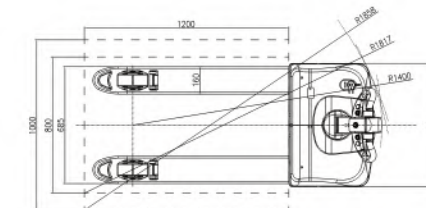
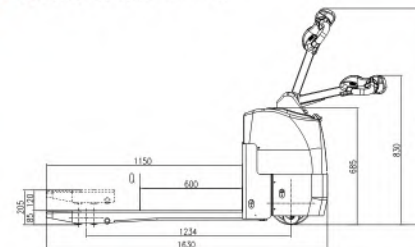
*本公司保留更改产品设计和规格的权利，恕不另行通知。

选配:

- 内置充电器；
- 货叉落地高度75mm。

OPTIONS:

- Built-in charger;
- Min. fork lowered height 75mm.



HELI 安徽合力股份有限公司
ANHUI HELI CO., LTD.

地址: 中国合肥经开区方兴大道668号
电话: (86 551)63632133, 63648005, 63689000
传真: (86 551)63633431
服务: 4001-600761
网址: http://www.helichina.com

授权经销商

ADD: NO. 668 Fangxing Street, Economical & Development Zone, Hefei, P.R. China
TEL: (86 551)63632133, 63648005, 63689000
FAX: (86 551)63633431
400 SERVICE: 4001-600761
WEBSITE: http://www.helichina.com